



# Update from the Port of Los Angeles

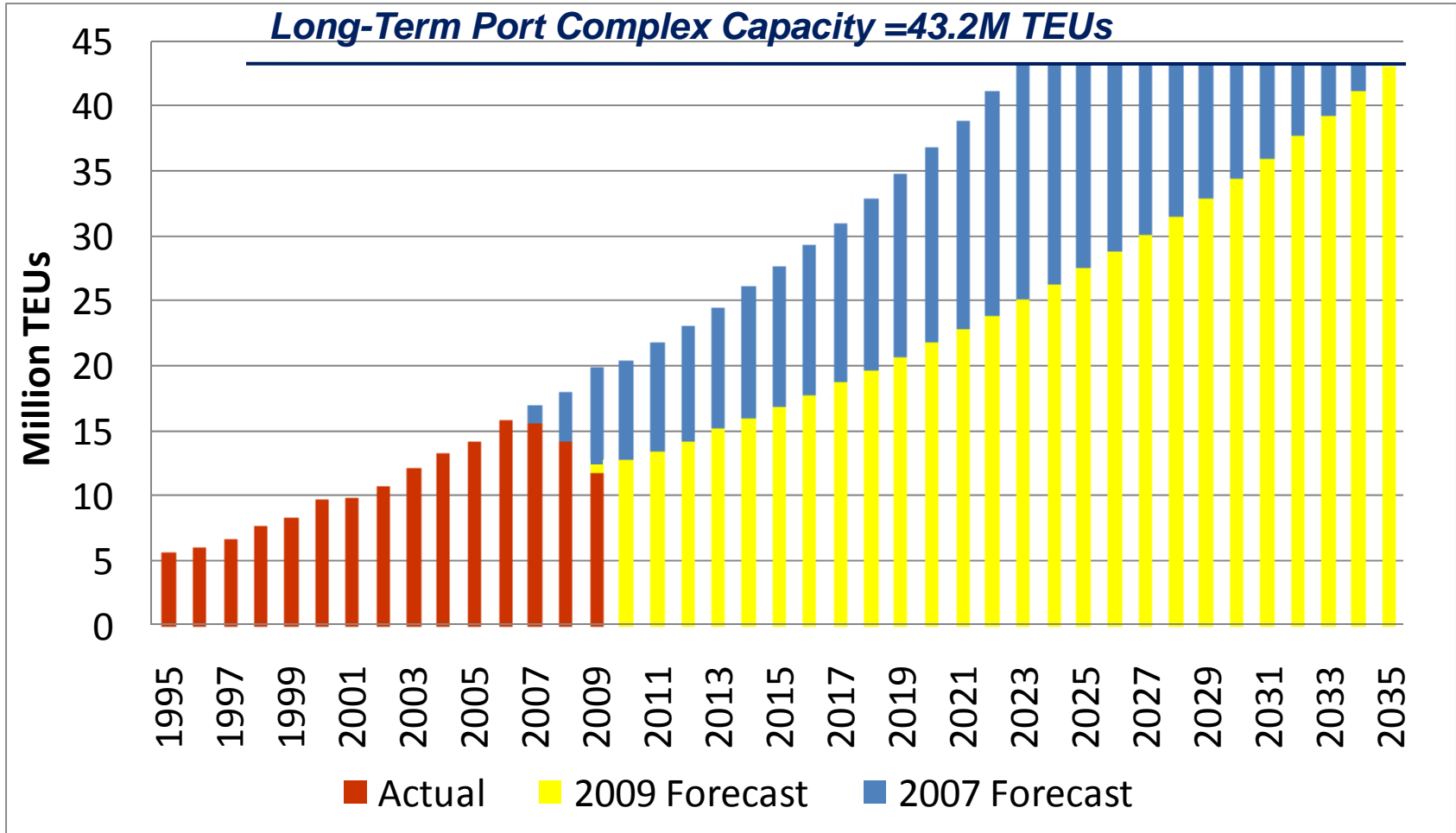
*Commissioner Kaylynn Kim  
Los Angeles Board of Harbor Commissioners*

*Transportation & Goods Movement Committee of the Los  
Angeles Area Chamber of Commerce*

August 17, 2010



# POLA/POLB Container Cargo Forecast - 2007 vs. 2009





# POLA faired well in a difficult market

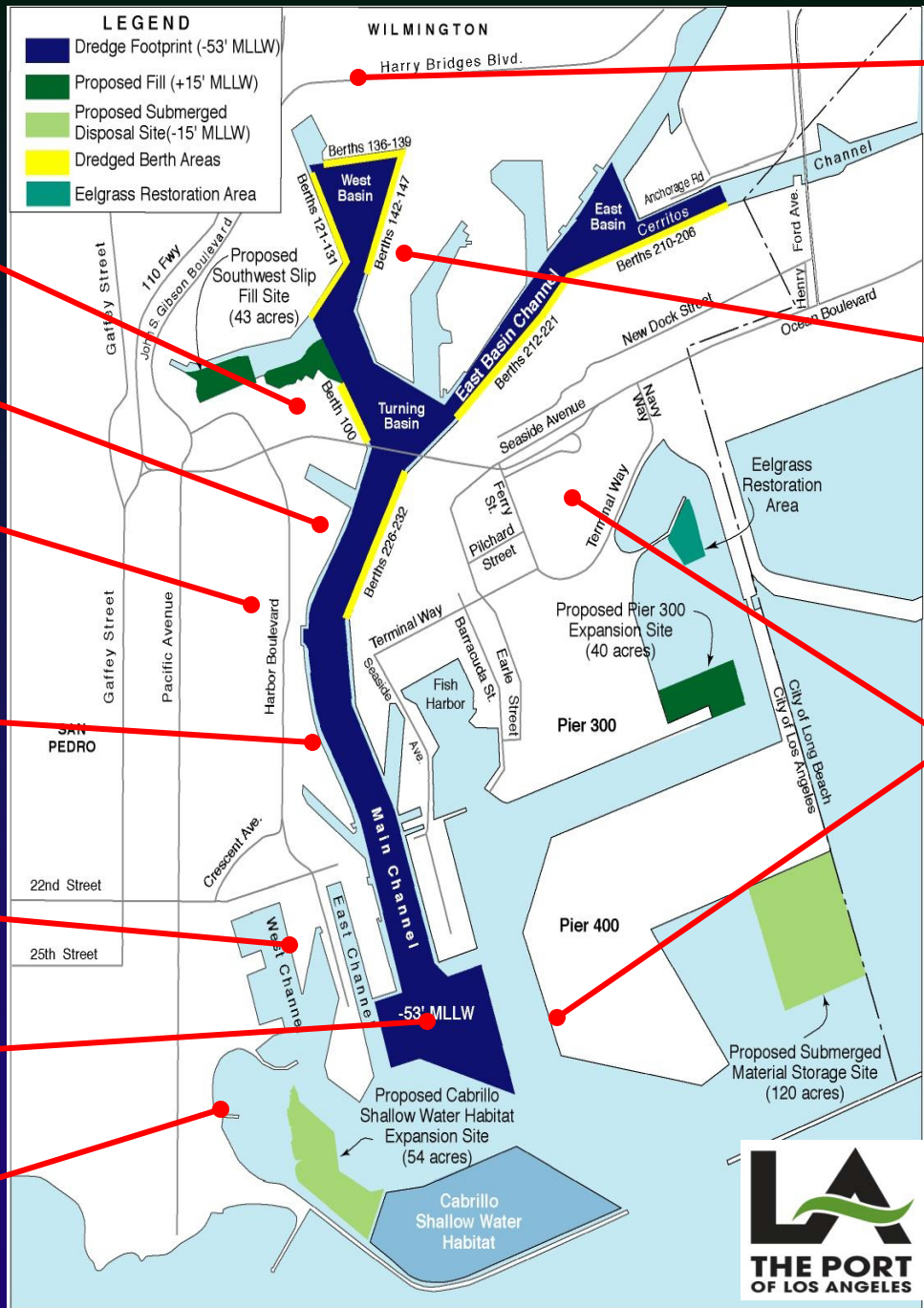
The Port of Los Angeles performed better than the West Coast average in 2009.

	2009 (TEUs)	2008 (TEUs)	Difference (TEUs)	Percent Change
Los Angeles	6,748,994	7,849,984	(1,100,990)	-14.0%
Long Beach	5,067,597	6,487,716	(1,420,119)	-21.9%
Vancouver	2,152,464	2,492,107	(339,643)	-13.6%
Oakland	2,051,153	2,236,244	(185,091)	-8.3%
Seattle	1,282,833	1,376,232	(93,399)	-20.2%
Tacoma	1,075,646	1,347,975	(272,329)	-6.8%
Prince Rupert	264,724	181,890	82,834	45.5%
Portland	174,203	245,459	(71,256)	-29.0%
<b>Total</b>	<b>18,817,614</b>	<b>22,217,607</b>	<b>(3,399,993)</b>	<b>-15.3%</b>



# The Port of LA Creates Jobs for the Entire Region

- **Port of LA 10-year Capital Improvement Plan – We are spending \$1 million/day**
  - \$800 Million building capacity
  - \$291 Million enhancing transportation infrastructure
  - \$123 Million improving security
  - \$100 Million cleaning up the environment
  - \$250 Million developing LA's waterfront
- **Construction jobs, engineering jobs, green jobs, good jobs, and all on projects that are good for the short and long-term**



**Wilmington Waterfront & Transportation Improvements**

**West Basin  
China Shipping  
B-100-102**

**Cruise  
Terminal**

**Port Police  
Headquarters  
Building**

**San Pedro  
Waterfront  
& Transportation  
Improvements**

**Cabrillo Marina  
Phase II**

**Main Channel  
Deepening Project**

**Cabrillo Beach  
Improvements**

**TraPac  
Berths 136-147  
Improvements**

**Pacific Energy Liquid  
Bulk Terminal**

**Capital  
Improvement  
Projects**



# Creating Jobs by Building Capacity



1. TRAPAC + 60 acres
  2. China Shipping + 30 acres
  3. Main Channel Deepening
  4. APL + 40 acres
  5. Plains All American
- 
6. Yang Ming + 30 acres
  7. Evergreen + 55 acres
  8. YTI + 80 acres

In 10-year  
CIP

"Below the  
line"...  
for now!



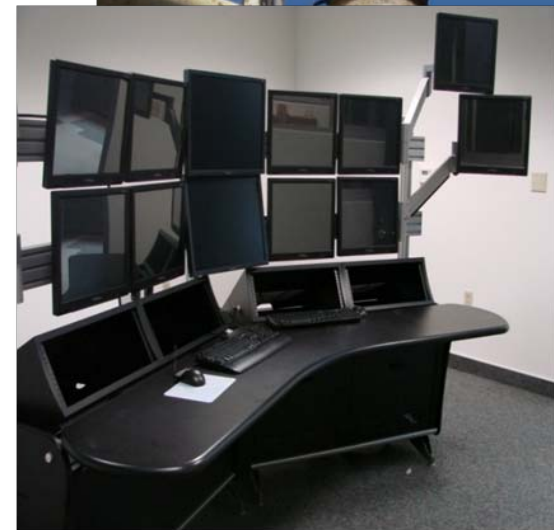
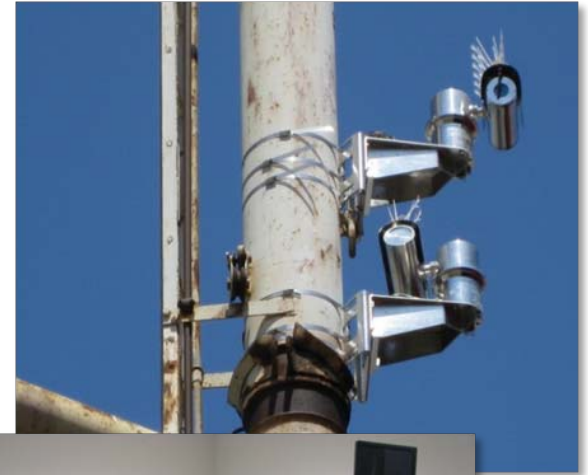
# Creating Jobs by Enhancing Transportation Infrastructure

Proposed Project	Lead Agency	Project Cost (millions)
Gerald Desmond Bridge	POLB	\$1,125
SR-47 Expressway	ACTA	\$687
I-110 Connectors	POLA	\$134
Navy Way Interchange	POLA	\$40
Ports Rail Systems (includes on-dock rail)	Ports, ACTA	\$1,773
<b>TOTAL</b>		<b>\$3,759</b>



# Creating Jobs by Improving Security

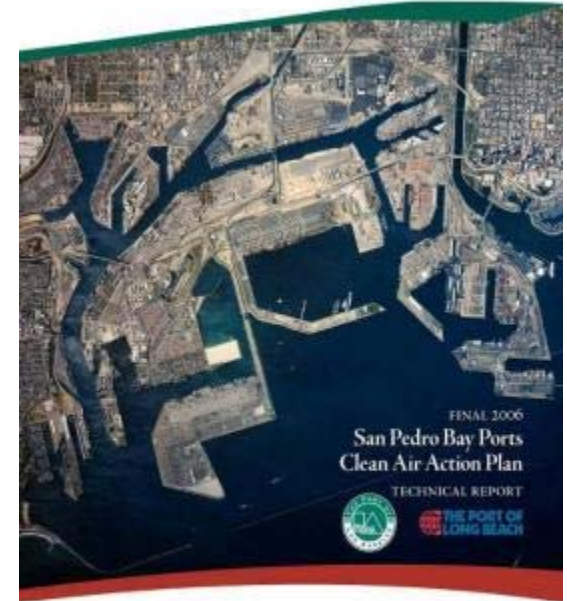
- Surveillance Camera System
- Fiber Optic Backbone
- Command and Control Center
- Radar
- Underwater Detection
- Sensor Integration
- System Operation & Upkeep
- Credentials and Access Control
- Supply Chain Security





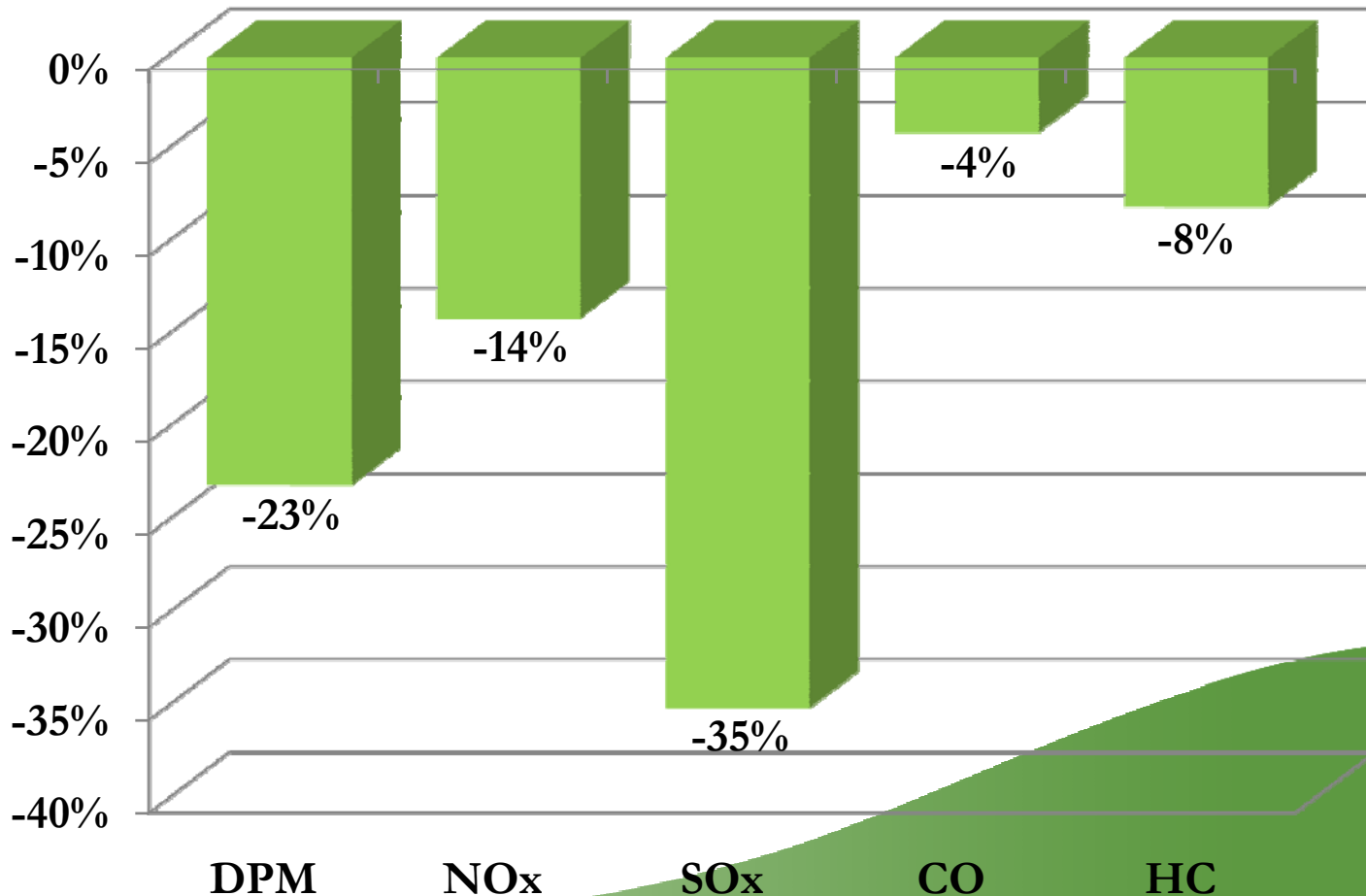
# Creating Jobs by Cleaning Up the Environment

- San Pedro Bay Ports Clean Air Action Plan (CAAP)
- Comprehensive 5-Year Plan
- Joint LA & Long Beach Plan
- Control measures for ships, harbor craft, trucks, cargo handling equipment and locomotives
- Emission reduction targets – “cut all sources by about half in five years”
  - ✓ Diesel Particulate Matter – 47%
  - ✓ Nitrogen Oxides (NOx) – 45%
  - ✓ Sulfur Oxides (SOx) – 52%



# CAAP is Proving Successful

Emission Reductions Per TEU Handled (2005 to 2008)





# Creating Jobs By Developing LA's Waterfront



Public Promenade



Transit Enhancements



Public Waterfront Access



New Cruise Facilities



Ports O' Call Enhancements



Downtown Harbors

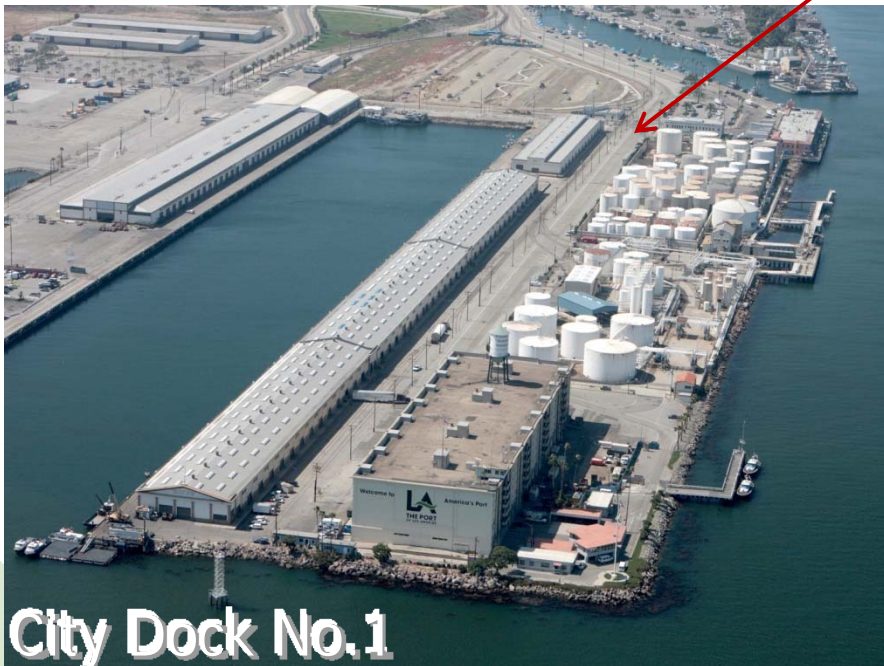


# Creating Jobs by Helping our Customers & Facilitating Trade

- 2010 Container Customer Initiatives: Provides a one-time \$19 million benefit to container terminal tenants to help them compete effectively.
- POLA's Trade Connect Program introduces small/medium business (SME) to exporting, partnering with LAWA, U.S. Dept. of Commerce, US EXIM Bank, and additional agencies
- This outreach is taking place in LA Council Districts and other Cities and Chambers in our region – *Let's partner!*
- Four important reasons to support this outreach:
  - 1 in 5 US manufacturing jobs depend on exports
  - 85 % of California manufacturers don't export
  - 96 % of the world's consumers are outside the US
  - 97 % of US exporters are SME's



# Creating Jobs by Thinking Long-Term

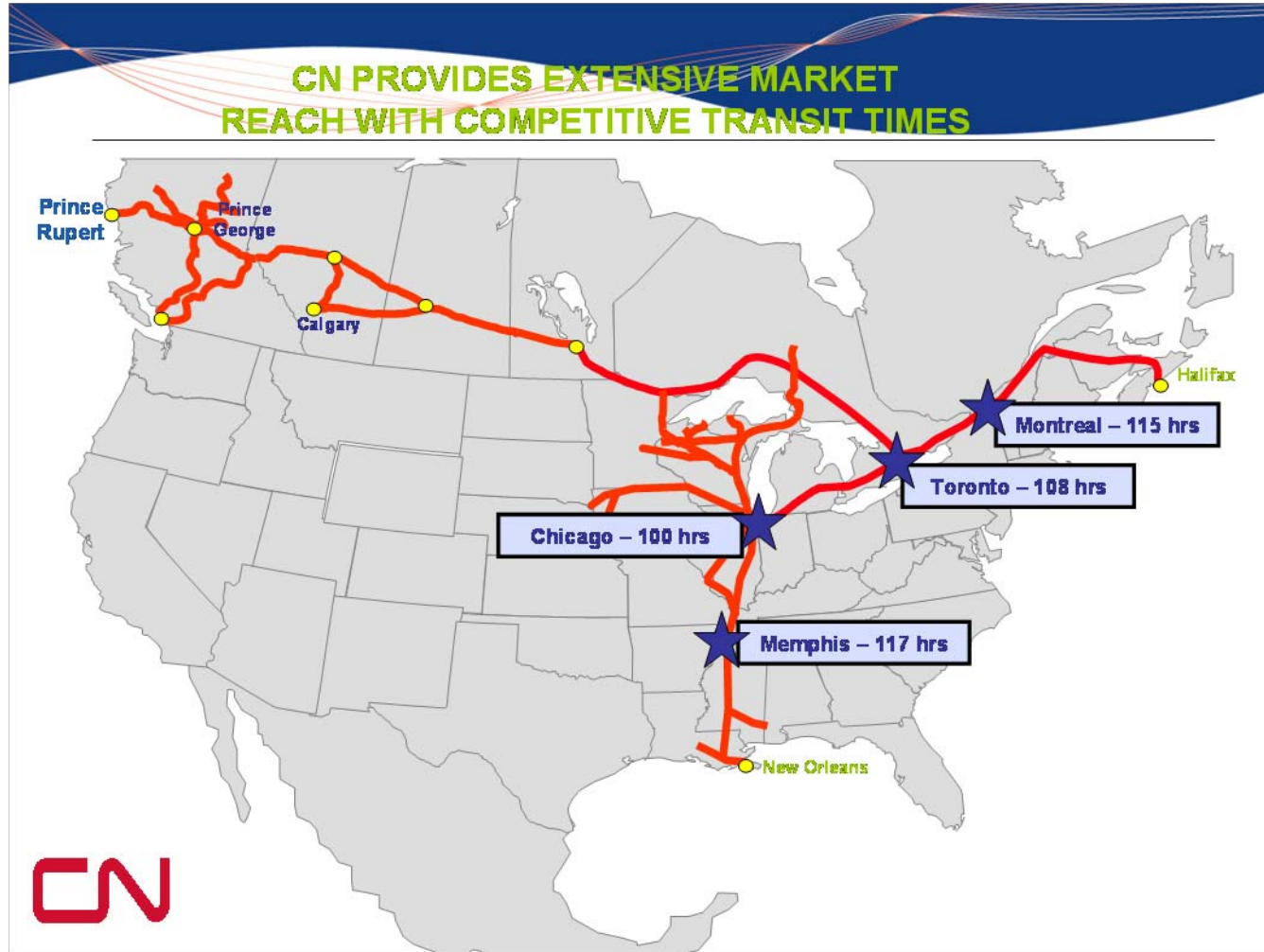


City Dock No.1

At the Port of LA, we are transforming a dock formerly used to store cotton and oil into **the leading urban marine research center in the world.**

This initiative is part of the larger waterfront revitalization.

# Creating Jobs and Competing Internationally



*We need the support of the Chamber to continue to compete successfully!*



# How the LAACC Can Help the Port Create Jobs

- Advocate jointly for state and federal funding
- Support port infrastructure projects
- Participate in trade connect and other regional programs
- Recognize our contributions and efforts (e.g. jobs, the environment)
- Collaborate and communicate



*Thank You*

